

PAL International School Spring School 2022

March 14 - April 8, 2022

PAL is offering Spring School 2022 for children six months old to six years old who are interested in "international schooling". Your child can join PAL's Spring School (Mondays through Fridays) and experience: "Everyday international school life" from the 14th of March through the 8th of April, 2022.



You may choose the days your child will attend Spring School 2022. Please circle the days your child will attend on the sign-up sheet, and include your choices for lunch, snack, supplementary food, and /or school bus service.

If you decide to cancel for any reason, the Spring School Enrollment fee, Registration fee, and Building Maintenance fee are not refundable. Cancellations will be accepted before 15:00 at least three (3) school days in advance. Failing to do so will result in an automatic refund deduction of 100%.

Lunch, snack, and supplementary food orders can be cancelled or changed by 15:00 the day before.

PAL Hours

PAL School is open 7:30 - 19:00

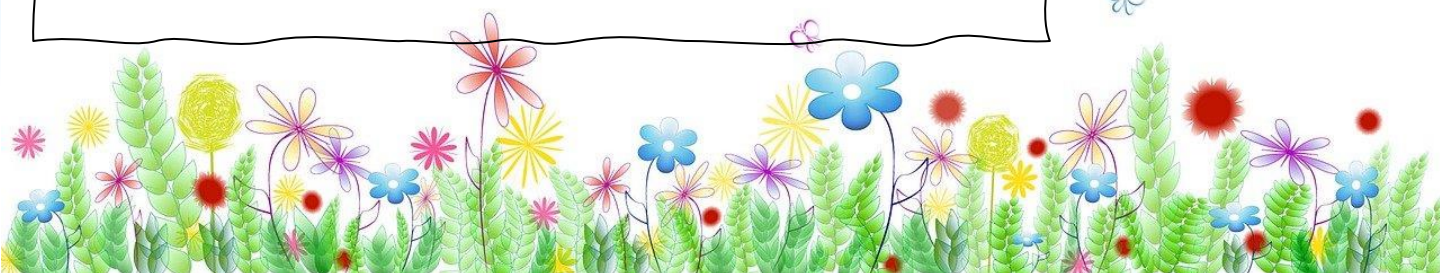
Morning Session 8:30 - 13:30/14:00

Afternoon Session 13:30 - 17:00

Full-day Session 8:30 - 17:00

Extension Hours are available for a maximum of two (2) hours after a day's session is over. (Example: For morning attendees, Extension Hours are available 7:30 to 8:29 and/or 13:30 to 15:29.) 900yen/30min.

PAL International
School
3 - 7-15
Nishi-Azabu Minato-ku
Tokyo Japan
〒106-0031
TEL 03-5770-8166
FAX 03-5770-8167
<http://www.pal-school.com>
E-mail
info@pal-school.com



School Lunch, Snack, and Supplementary Food

Prices per day: Lunch 500yen; Snack 200yen; Supplementary Food 200yen

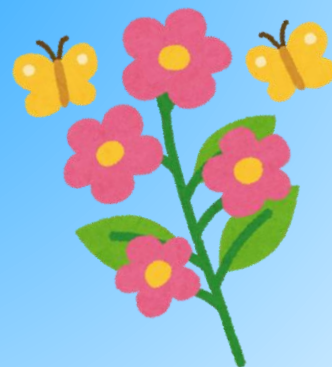
- You can order school lunch for your child during Spring School 2022. Our school lunch is cooked at Seiwa's kitchen (Yoyogiuehara campus) under the supervision of a nutritionist, and is delivered to PAL daily. Please see lunch menu below. (April's menu will be announced later.) If you prefer, your child can bring a lunch from home.
- PAL can also provide a healthy snack (Rice crackers). If you prefer, your child can bring a lunch from home.
- Supplementary Food is available for children who stay after 18:00.

Lunch menu March 2022

14	15	16	17	18
Rice, minestrone, Grilled chicken marmalade, Cabbage and tuna	Wakame rice, Chinese cabbage miso soup, Deep-fried Kouya tofu, vegetable salad	Uzbek cuisine prof-style rice, Consomme soup (cabbage), Colorful pickles	Chicken soboro rice, Sumashi soup, Gomoku beans, Colza Blossoms	Rice, Miso soup with cabbage and onions, Sweet and spicy grilled pork, Komatsuna salad
Rice, Chickpeas, Onion, Carrot, Celery, Canned tomatoes, Chicken soup, Salt, Chicken, Marmalade, ginger, soy sauce, Mirin, Cabbage, Carrot, can of Tuna oil pickled, Sugar, vinegar, Oil	Rice, wakame seaweed, Chinese cabbage, Bean sprout, Onion, Rice-miso, tofu, soy sauce, Salt, ginger, Potato starch, rice flour, Oil, broccoli, Carrot, Turnip, Beacon, mayonnaise	Rice, Onion, Salt, Carrot, Consomme, Oil, Chicken, Turmeric powder, cabbage, Corn, soy sauce, Shimeji, Radish, sugar, Vinegar, Cucumber	Rice, Minced chicken, Soy sauce, Brown Sugar, Oil, Carrot, Onion, wakame seaweed, Naruto, Bonito, Konbu, Salt, Soybeans, Carrot, Burdock, Shiitake, Board konjac, Mirin, Chinese cabbage, Nabana, Bonito & Kombu stock, Sugar	Rice, Cabbage, Onion, Enokitake, Bonito & Kombu stock, Rice-miso, Pork, Soy sauce, Salt, Sugar, Mirin, vinegar, Komatsuna, Carrot, Yellow bell-pepper, Oil, Mini Tomato
21	22	23	24	25
No School	No School	Corn-rice, Soy milk miso soup, Japanese style tofu hamburger, Cabbage coleslaw salad	Curry-rice, Potato-salad, Seasonal fruit	Rice, Hittsumi soup, Grilled white fish with herbs
		Rice, Consomme, Salt, Can of corn, Enokitake, Onion, Carrot, Beacon, Shimeji, Iwashii, Rice-miso, Soy-milk, Minced pork, Cotton tofu, Shiitake, soy sauce, Mirin, Leek, Radish, Cabbage, Cucumber, Ham, vinegar, Oil, Sugar, Pepper, mayonnaise	Rice, Pork, Carrot, Onion, Potato, Oil, Carry roux, Garlic, Cucumber, Carrot, Ham, Can of corn, Salt, mayonnaise, Lemon	Rice, Chicken, Shiitake, Leek, Carrot, Burdock, Shiratamako, Tofu, Water, Bonito, Mirin, Soy sauce, Chinese cabbage, Flatfish, Basil Basilico, garlic, Oil, Salt
28	29	30	31	
Rice, Spinach miso soup, Chicken meatball, Shirasu Japanese salad	Rice, Pumpkin miso soup, Grilled miso mayonnaise, hijiki seaweed	Rice, minestrone, Grilled chicken marmalade, Cabbage and tuna	Rice, Vermicelli soup, Pork vinegar, Cucumber namul	
Rice, Spinach, Onin, Enokitake, Bonito & Kombu stock, Rice-miso, Minced chicken, Lotus root, Oil, rice flour, Brown sugar, Soy sauce, Potato starch, cabbage, Cucumber, Wakame seaweed, Dried shirasu, Vinegar, Salt, Sesame oil	Rice, Bonito & Kombu stock, Rice-miso, pumpkin, Shimeji, Leek, Spanish mackerel, Soy sauce, hon' mirin, Mayonnaise, Hijiki, Carrot, Fried tofu, Shirataki, Oil, sugar	Rice, Hiyokomame, Onion, Carrot, Celery, Canned tomatoes, Chicken soup, Salt, Chicken, marmalade, Ginger, Soy sauce, Mirin, Cabbage, can of Tuna oil pickled, vinegar, sugar, oil	Rice, Vermicelli, Mung bean sprouts, Garlic, Can of corn, Salt, Pork, soy sauce, ginger, Potato starch, Onion, Carrot, bamboshoot, BellPepper, Sesame oil, ketchup, vinegar, sugar, Mirin, Salt, Cucumber, Sesame, Japanese-style dashi stock	

Fee information Non-member

Morning Session 午前クラス		
Age年齢	Time時間	Fee/Day料金 日
6mths-18mths	8:30am-1:30pm	¥12,000
18mths-3.5yrs	8:30am-1:30pm	¥10,000
3.5 yrs-6 yrs	8:30am-2:00pm	¥10,000
Elementary Schooler	8:30am-2:00pm	¥10,000
Afternoon Session 午後クラス		
6mths-18mths	1:30-5:00pm	¥10,000
18mths-6 yrs	1:30-5:00pm	¥7,000
Elementary Schooler	1:30-5:00pm	¥7,000
All Day Session 全日クラス		
6mths-18mths	8:30am-5:00pm	¥15,000
18mths-6 yrs	8:30am-5:00pm	¥13,500
Elementary Schooler	8:30am-5:00pm	¥13,500



Hirogari School Bus

During Spring School 2022, children three years old and up can ride our school bus!

The bussing area is a 20~30-minute bus ride from PAL, and the area is limited. Please let us know your ideal pick-up/drop-off place and we will inform you of the bus route availability.

The bus service is only available on a 'round trip' basis: that is, ride the Morning Bus and leave PAL on the 14:00 bus, or ride the Morning Bus and leave PAL on the 17:00 bus. We cannot offer bus service only for afternoon classes.

Our school bus has an air purifier, and we disinfect the seats and interior of the bus daily.

